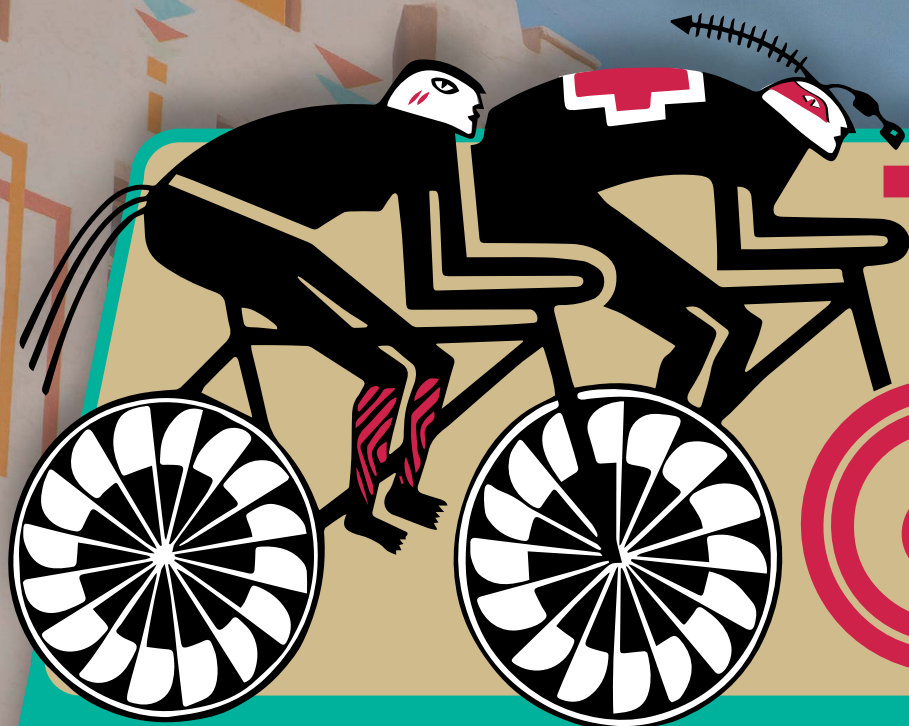


39  
years



# TOUR OF THE GILA™ 2026

Presented by

**NEW MEXICO**  **TRUE**

APRIL 29-MAY 3, 2026 | SILVER CITY • NEW MEXICO

## SPECTATOR GUIDE



A handbook to watching America's most iconic road bicycling stage race brought to you by

 **FREEPORT-  
McMORAN**

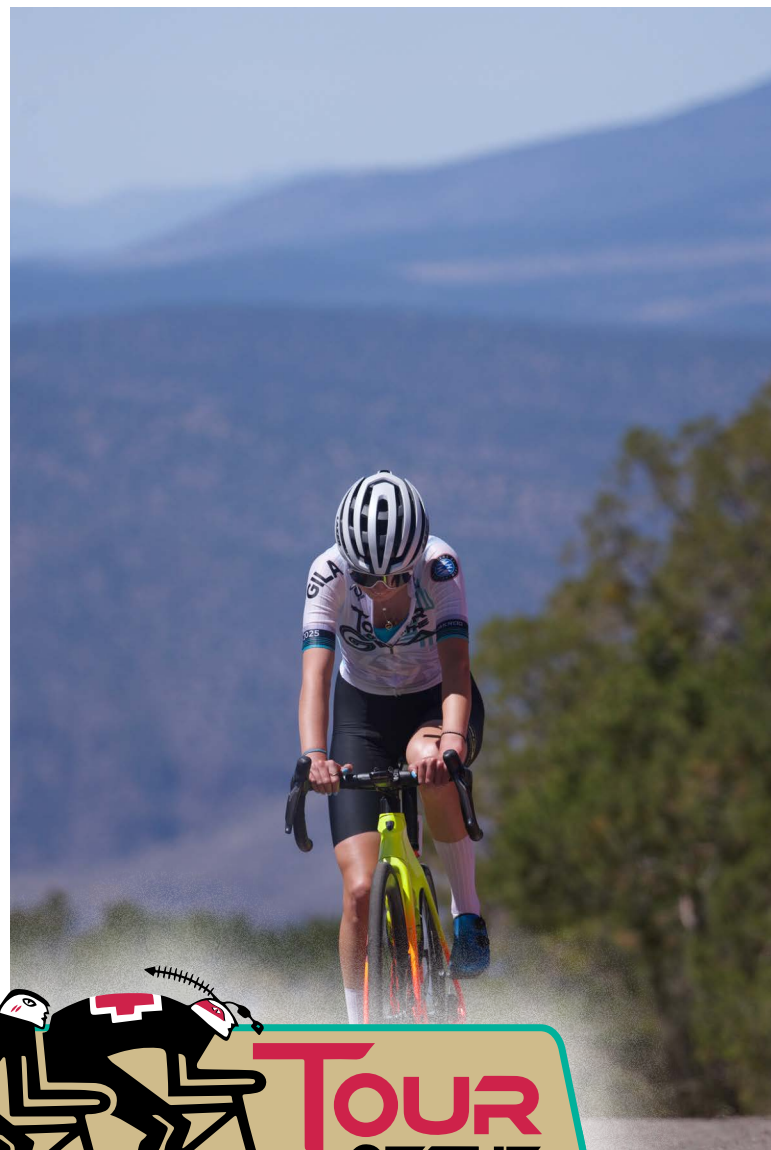
# GRANT COUNTY CELEBRATES 39 YEARS OF HOSTING TOUR OF THE GILA

Tour of the Gila presented by New Mexico True is the iconic road bicycling stage race based out of Silver City, New Mexico. Since 1987, the race has become renowned worldwide for notoriously challenging courses and is a treasured favorite among cyclists at all levels.

Over five days, athletes follow routes leading from the town's colorful streets, through the region's rich history, and along the edges of the nation's first designated wilderness.

Sanctioned by both the global and national governing bodies of cycling, Tour of the Gila presented by New Mexico True provides a rare opportunity for amateur competitive cyclists to compete on the same courses (and on the same days) as the professional athletes.

Tour of the Gila presented by New Mexico True runs from Wednesday, April 29, through Sunday, May 3, 2026.



**FOR A DETAILED SCHEDULE,  
VISIT [TOUROFTHEGILA.COM](https://www.tourofthegila.com).**



# STRONGER TOGETHER

THE TOUR OF THE GILA REFLECTS THE STRENGTH OF OUR COMMUNITY.

Gila Regional Medical Center is honored to support the event through the GRMC Cancer Center.

We're proud to be the **Green Jersey Sponsor & Official EMS Provider** for the Tour of the Gila 2026.

Here for our community—on the course and beyond.



**GILA REGIONAL**  
*Cancer Center*

## JOIN US FOR OUR LOCKS OF LOVE HAIR DONATION EVENT

Criterion Day | May 2 at Noon  
The Hub Plaza



Stop by during the crit to participate in our Locks of Love hair donation event and be part of something bigger than the race.

**Donate your hair.  
Show your support.  
Help bring hope to cancer patients.**

Learn more about our services at [GRMC.org](http://GRMC.org)

# TYRONE INDIVIDUAL TIME TRIAL

p./b. Southwest Bone and Joint Institute / Brian and Lynn Robinson

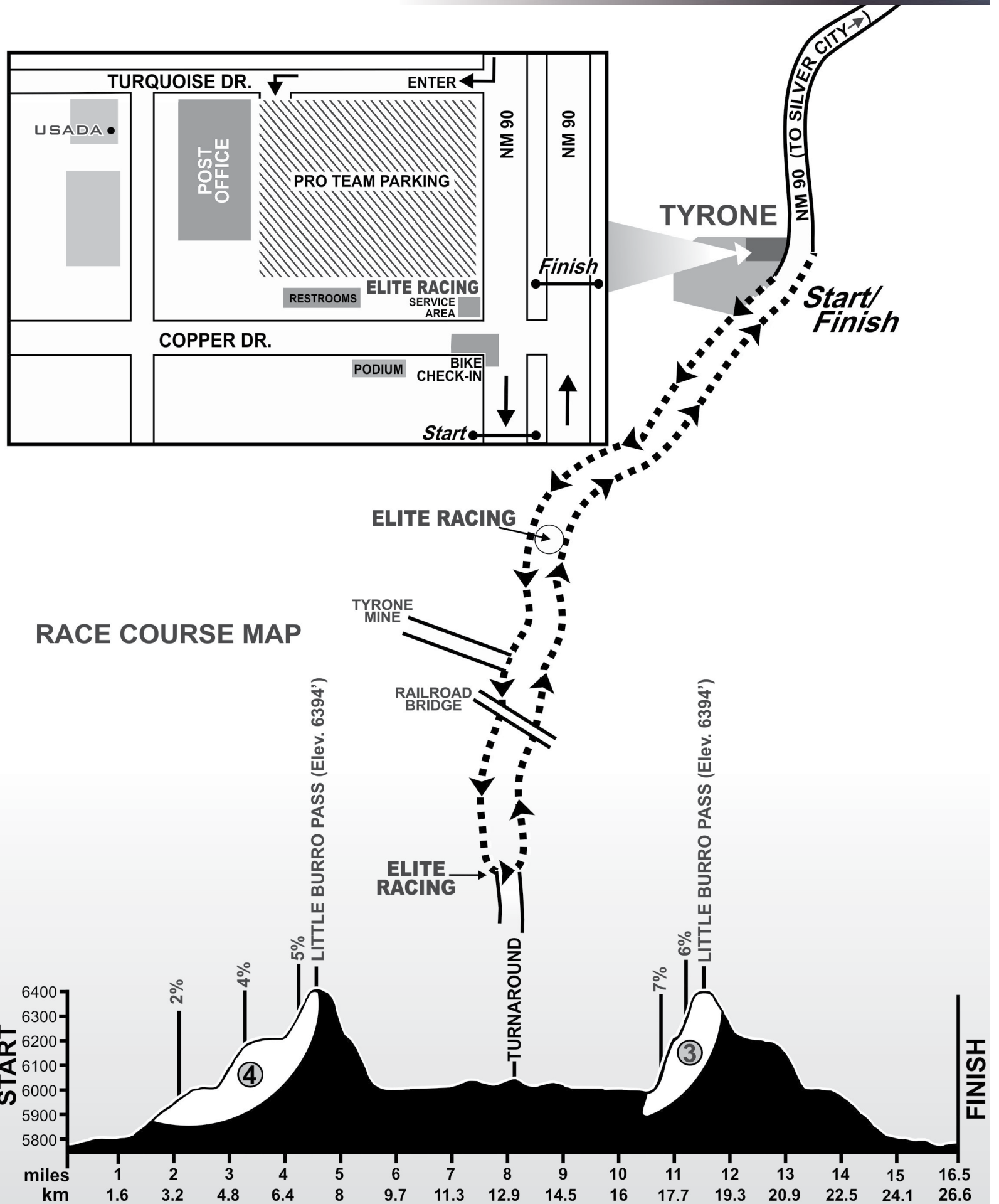
WED., APRIL 29

Length  
26 km. (16.15 mi.)

Category  
UCI Men  
Followed by UCI Women

Start  
9:15 a.m.

THE TYRONE INDIVIDUAL TIME TRIAL is one of the most spectator-friendly stages. With the start and finish lines in the historic mining site of Tyrone, the course is wide-open with places along the roadside to observe the racers, who turn around between mile markers 30 and 29. Wearing aerodynamic helmets and speed suits while riding specialty bikes, each rider tackles the course alone. Racers leave at 30-second intervals and battle the clock over the 26 km. (16.15 mi.) course with 304 m. (1,000 ft.) of climbing.





## TRAVEL INFO

### Details to help you plan ahead

*Some southwest New Mexico roads and highways will be impacted as the races take place daily. The athletes thank residents for their patience and ask for continued respect.*

**WEDNESDAY 4/29:** NM-90 will be closed on the Tyrone side from 9 a.m. to 12:30 p.m. and at US-70 in Lordsburg from 8:15 a.m. to 11:45 a.m. Please yield to Tour of the Gila participants, volunteers, and crew members, or plan any travel on NM-90 either before the Tyrone Individual Time Trial presented by Southwest Bone and Joint Institute/Brian and Lynn Robinson begins or after it concludes.

**THURSDAY 4/30:** The Mogollon Road Race presented by Gila Regional Cancer Center travels through downtown Silver City, up Market Street, and west on US-180, looping around on NM-211 and finishing on NM-159 East near mile marker 7. Impacts are expected to run from 8 a.m. through 2:30 p.m. The streets around Gough Park will be closed starting at dawn.

**FRIDAY 5/1:** During the Inner Loop Road Race presented by Lyman Communications, roads impacted include NM-15, NM-35, NM-152, NM-356, and US-180. With rolling closures of US-180, NM-35 and NM-152, a full road closure of NM-15 is planned for 7:30 a.m. to noon. The road will be closed between mile markers 6 and 25.

**SATURDAY 5/2:** Road closures start at 5 a.m. ahead of the Downtown Criterium presented by Leaders of Enchantment. Streets affected include Bullard, College, Cooper and Broadway. Entry points into the racecourse are on Santa Rita Street at College Avenue, and Arizona Street at Broadway Street. Residents whose homes are within the closed-loop course will be provided maps and directions for accessing the area. Those coming to watch the races or participate in the citizen fun races are urged to either walk or ride bicycles into downtown as there will be limited parking. For a comfortable and safe day of cheering on the athletes, bring chairs, wear sun protection and ring cowbells.

**SUNDAY 4/27:** The streets surrounding Gough Park will be closed from 6 a.m. to 10:15 a.m. while athletes begin the queen stage: the Gila Monster Road Race presented by New Mexico True. NM-15 will be closed from 9 a.m. to 2:30 p.m. between Bear Creek Cabins in Pinos Altos and the intersection with NM-35. Other roads impacted include NM-35, NM-152, NM-356 and US-180.

*While the race plans to run on schedule, the closures are subject to change without notice at any time. Organizers will make an effort to share any updates to the schedule on [TourOfTheGila.com](http://TourOfTheGila.com).*

**FOR INFO ON ROAD IMPACTS,  
VISIT [TOUROFTHEGILA.COM](http://TOUROFTHEGILA.COM).**

# SOUTHWEST BONE AND JOINT INSTITUTE

*Rick Lemke, PA-C  
Sravanthi Reddy, MD  
Brian Robinson, MD*

### Our Services Include:

Open Air MRI  
Arthroscopy  
Fracture Care  
Sports Medicine  
Total Joint Replacement  
EMG/NCV Neurological Studies  
Osteoarthritis Injections  
Ultrasound-Guided Injections  
Physical & Occupational Therapy  
Anterior Approach Total Hip Replacement  
Platelet Rich Plasma (PRP) Injections

Most Insurances Accepted  
Se Habla Español



# UNDERSTANDING A STAGE RACE

## Everything you never knew to ask about watching Tour of the Gila

**GOOGLE HOW TO WATCH** a bike race. Topping the search results are lists of TV streaming services that are required if you want to follow pro racing. But at Tour of the Gila presented by New Mexico True, anyone can come see the race IRL without needing a Peacock subscription or an HBO Max login.

The only thing a cycling-curious person needs is a basic understanding of the team-oriented endurance sport of road bicycle racing. While many endurance races are single-day events, multi-day stage races add extra layers of excitement to competitive road biking. While any person wanting to learn more about the races could review the UCI tech guides or the USA Cycling race bible on the Tour of the Gila website, here's a beginner-friendly rundown of what to know and how to best enjoy the iconic American stage race in person. Go from cycling ignoramus to super fan with these tips.

### WHO'S WHO

At Tour of the Gila, there are seven race fields. Five are sanctioned by the national governing body of cycling, USA Cycling. Two are sanctioned by the global governing body of cycling, the Union Cycliste Internationale (UCI).

USA Cycling categories have the least experienced riders grouped into category 5 and the most experienced riders labeled cat 1s. Individual athletes may register for whichever field best matches their experience level and/or their age. The master's fields and special bonus competitions are for those over a certain age.

At Tour of the Gila, which is the only stage race in the nation sanctioned by the UCI, some have experience and designations even beyond the category 1 level. In order to race in a UCI field, athletes must be rostered with a team that's been invited to participate in the Tour of the Gila UCI men's or women's races. This year, Tour of the Gila is hosting more teams than ever in the UCI races. The count is 19 men's teams and 15 women's teams. Of those 34 teams, 15 are international teams.

### ONE DAY AT A TIME

The most obvious thing to do when watching the races is to look for the person leading each race field during whatever stage is underway. (By the way, a stage is a single segment or course in a competition for the lowest

cumulative time. In this case, athletes ride one stage per day over the course of several days.) It's valid—and fun—to root for the athletes vying to be the first to cross the finish line. Winning a stage at Tour of the Gila is known as a major indicator of talent. Athletes who beat out the other competitors at the country's only UCI stage race prove they have strength, endurance, and tactical prowess that bests the hemisphere's top cyclists.

### WINNING OVER TIME

The stage winner doesn't equate the overall winner. The competition for the lowest cumulative time over multiple days is called the General Classification, and the person leading that is the overall winner—so far. Then, there's a special award for the athlete under age 23 who's highest on the General Classification. To make things even more fun, there are competitions for the sprint and mountains classifications. In those, athletes earn points for crossing sprint lines along the way (and some finish lines) in high standing and for reaching summits in consistently good places.

At Tour of the Gila presented by New Mexico True, keep an eye on the riders wearing the four race jerseys which are immediate giveaways about who is leading each of these classifications. Look for the New Mexico True leader jersey, Lyman Communications climber jersey, Gila Regional Cancer Center sprinter jersey, and Southwest Bone and Joint Institute/Brian and Lynn Robinson best young rider jersey. For more on the race jerseys and what each signifies, flip to page 16 of this guide.

Both of the athletes who earned the UCI leader jerseys in 2025 are returning in 2026: Kieran Haug, who rode for Project Echelon in 2025 and is with Modern Adventure Pro Cycling this year, and Lauren Stephens of Aegis x Leaders of Enchantment.



### TEAM PLAYERS

You'll notice that sometimes a team appears to be controlling the front of a peloton. (A peloton is the main group of riders. A team will be evident because all members will be decked out in identical jerseys and shorts — with the exception of any national or world champions who are required to wear the jerseys indicating their status.) Usually, this is a sign that a team is working for a common goal, whether that goal is to set an individual up for a sprint or a stage win or to protect the overall leader.

In the Downtown Criterium on Saturday, for example, it might seem intuitive to root for the person leading the pack. But if you watch closely, you may see that those wearing jerseys are sitting behind the lead riders—often their own teammates—and conserving energy by getting pulled along in the slipstream created by whoever is in front.

### DIVE DEEPER

If you're getting pretty into watching the races and don't want to miss a thing, stay tuned to the results released after each stage. Familiarize yourself with the individual athletes in jersey contention. Maybe even commit their bib numbers to memory. You'll observe them sprinting for points at the conclusion of each stage and at designated spots along each course, climbing to be one of the first to top out on an ascent, and fighting to maintain a low cumulative time for a premier spot on the general classification.

### MORE COWBELL

Incentives called primes (pronounced "preems") create race dynamics specific to a single stage. For example, listen to race announcer Brad Sohner during the Downtown Criterium presented by Leaders of Enchantment to hear when a prime lap is starting. During a prime, money is typically on the line for the rider who finishes that circle around the course ahead of the bunch. One clue that a prime lap is underway is the sudden increased clanging of cowbells. Add yours to the ruckus!

### IN THE SADDLE

Even those without USA Cycling or UCI race licenses can experience Tour of the Gila not just from the sidelines but from a bicycle seat too. The Citizen Fun Races presented by First New Mexico Bank take place on the criterium course Saturday. Then, Sunday's citizen road race starts at Camp Thunderbird and finishes in Pinos Altos. Registration for the citizen fun races is open through April 30th online at [tourofthegila.com/race/citizens-races](http://tourofthegila.com/race/citizens-races) and in-person at The Hub Plaza between 10 and noon on Saturday, May 2.



**SCAN TO SIGN UP  
FOR THE CITIZEN  
FUN RACES.**



**BRIAN AND LYNN ROBINSON**

# MOGOLLON ROAD RACE

p./b. Gila Regional Cancer Center

THURS., APRIL 30

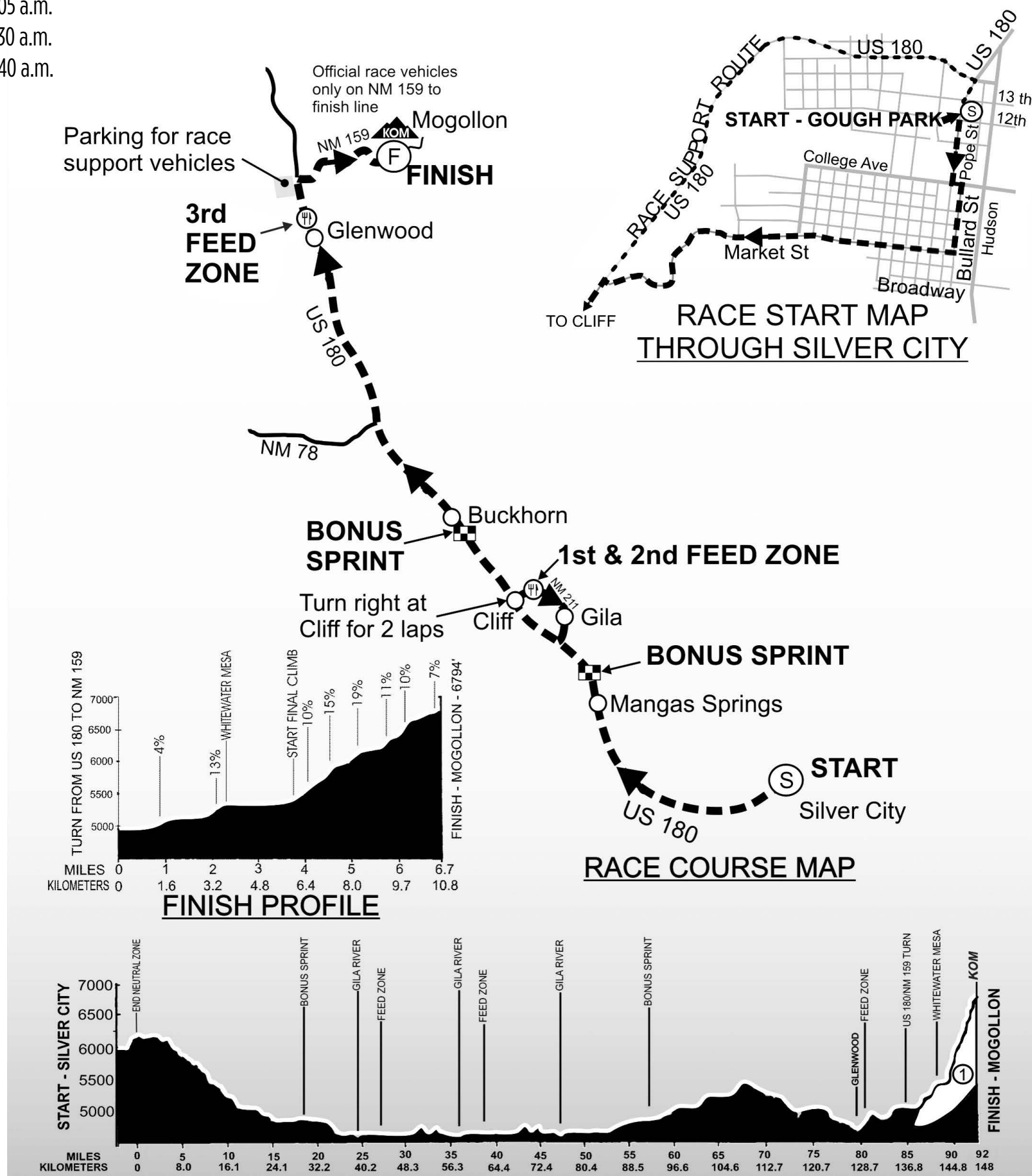
## Length

117.6-151.3 km. (73-94 mi.)

Category	Start
Men 1,2	7:50 a.m.
Men 3	8:05 a.m.
UCI Women	8:30 a.m.
UCI Men	9:40 a.m.

STARTING AT GOUGH PARK in Silver City, challenge hangs in the air as the neutral parade heads down Pope St., then winds through Historic Downtown Silver City then up Market St. (known to the locals as Snake Hill). Once the riders have made the left turn onto Hwy 180 W., the race officially begins. The course continues toward Cliff and loops through Gila, communities nestled on the banks of the Gila River, New Mexico's last wild river. The area's ranching traditions are evident as the race makes its way through grazing land with vast vistas showcasing the Mogollon Mountains.

Hwy 180 then takes the racers on a feed zone near Glenwood. Racers now start up the rolling hills leading to the Category 1 climb to the ghost town of Mogollon. The 640.1-meter (2,100-foot) climb winds to the finish



line. Spectators must either watch from the lowlands or travel to the mountain finish line ahead of the first racers. NM 159 will be closed to all but race traffic before racers turn onto the narrow, single-lane road. People may park at the turnoff to NM 159 and either walk or ride up, as long as spectators stay well off the road when races come through.



Lyman Communications is proud to continue our tradition as a provider of internet solutions to the Tour of the Gila.

Since 2011, Lyman Com has been providing mission-critical connectivity for when it matters most. Our goal is to provide high-speed internet and cellular service with a rapid response anywhere in the world.

*Specializing in rapidly deployable communication solutions*

[lymancom.com](http://lymancom.com)



Since 1987, the Tour of the Gila has showcased our region's stunning landscapes, rural roadways, and exceptional outdoor recreation opportunities. With deep community involvement, hundreds of dedicated volunteers, and decades of proven success, these events highlight Grant County's spirit, hospitality, and commitment to rural economic development and tourism growth.

We are pleased to champion events that elevate our county's visibility, strengthen our economy, and reflect the vibrant, community-driven character of Grant County.



PROUDLY SUPPORTING THE TOUR OF THE GILA SINCE 1987.

# INNER LOOP ROAD RACE

p./b. Lyman Communications

FRI., MAY 1

## Length

98.2-123.9 km. (61-77 mi.)

## Category

Pinos Altos Start:

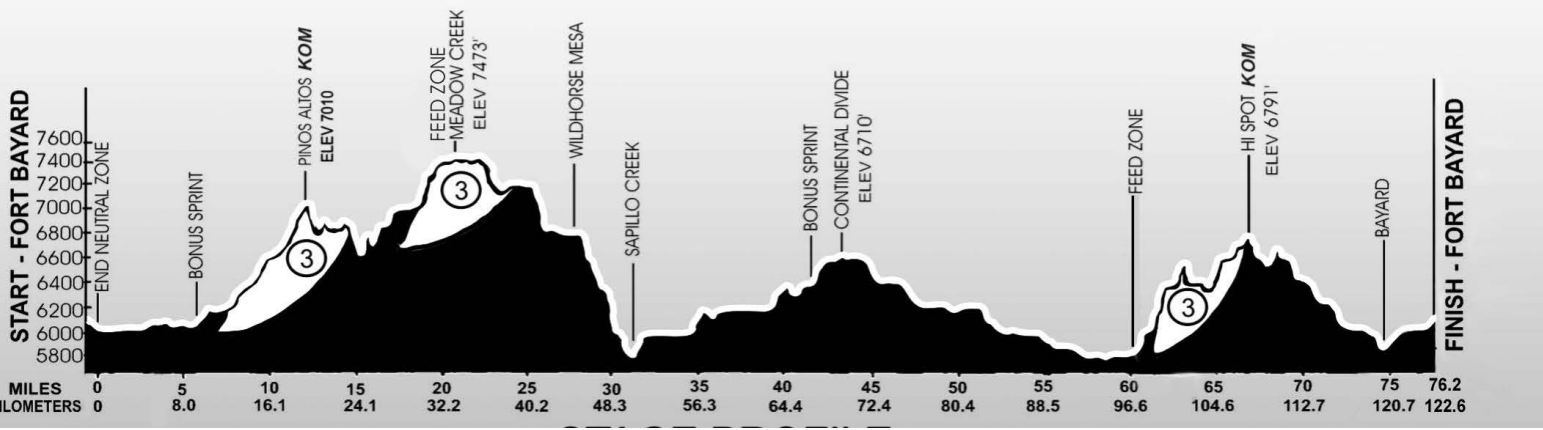
Men 4,5 8:10 a.m.  
 Master Men 1,2,3,4 8:20 a.m.  
 Women 1,2,3,4,5 8:25 a.m.

Fort Bayard Start:

UCI Men 9:00 a.m.  
 Men 3 9:40 a.m.  
 Men 1,2 10:00 a.m.  
 UCI Women 10:20 a.m.

THE TRAIL OF THE MOUNTAIN Spirits National Scenic Byway is the path most of the race follows for this stage. Some categories start in Pinos Altos; other races start in historic Ft. Bayard and make their way to the first KOM in Pinos Altos. Following a twisting descent to Sapillo Crossing, riders race by Lake Roberts then along the picturesque Mimbres Valley. After a right/left/right turn sequence past San Lorenzo Elementary School, the race travels up Acklin Hill, where the infamous head winds start kicking up for the final 15 miles to the sprint finishes

## Start



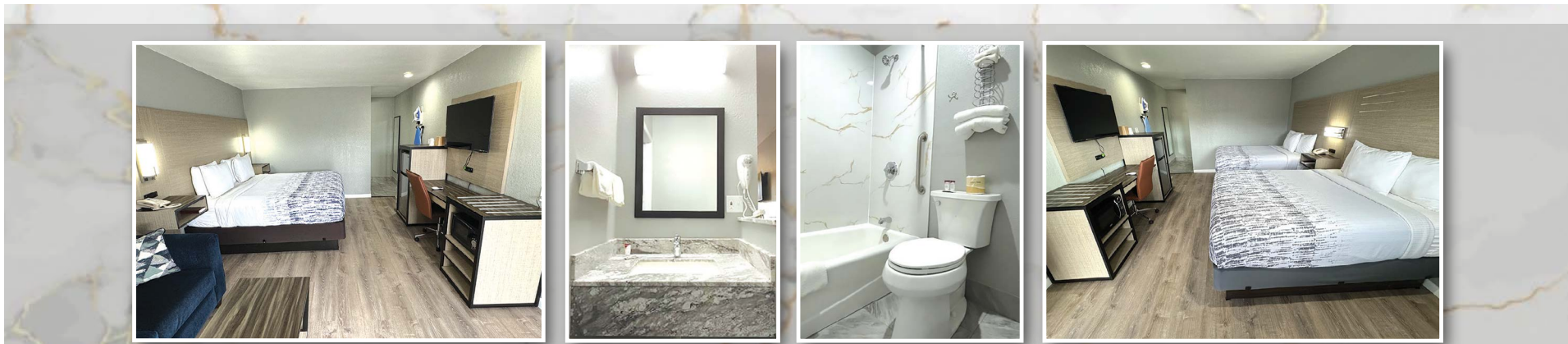
in Ft. Bayard, where spectators can view riders vying for the win. Take time to explore

area trails, play disc golf, or tour the grounds of this military fort which dates back to

1866 and was mainly staffed by African-American "Buffalo Soldiers."



- ATTACK:** A sudden attempt to get away from a rider or group of riders
- BONK:** When a rider completely runs out of energy
- BREAKAWAY:** A rider or group of riders who has separated themselves ahead of the main pack
- BRIDGE THE GAP:** When a rider or group of riders attempt to advance from a group of riders to one further ahead
- DOMESTIQUE:** A rider who typically rides in support of a designated team leader
- DRAFTING:** Riding in the slipstream of another rider ahead, generally expending 30% less energy
- DROP:** To leave another rider or group of riders behind by attacking
- FIELD:** The main group of riders, a.k.a. the Pack, Peloton or Bunch
- LEAD OUT:** A team-oriented move in which one rider begins a sprint to give a head start to a teammate riding in his draft
- PULL:** To take a turn at the front of a paceline and block the wind for other riders in the pack
- SAG WAGON:** A vehicle that follows a race and picks up riders who are unable to finish
- SITTING IN:** When one rider refuses to take a pull and break the wind for a group in which he's riding
- SLIPSTREAM:** The pocket of air created by a moving rider, just as in car or motorcycle racing
- SOIGNEUR:** A French term for cycling's equivalent of a trainer. A soigneur usually looks after the physical health of a rider and gives massages
- SPRINT:** The sudden burst of speed before the race's finish or an intermediate sprint point
- TAKE A FLYER:** When a rider attacks the main pack and creates a solo breakaway
- WHEEL SUCKER:** A derogatory term used to describe someone who rides in a pack without taking a pull at the front and blocking the wind



Conveniently located near the intersection of US Highway 90 and Highway 180 East. Near the historic downtown area, art galleries, Fort Bayard National Historic Site and Western New Mexico University.



- ALL ROOMS IMPROVED • ALL RATES AVAILABLE**
- Refrigerator • Microwave • Pillow-Top Beds
  - Flatscreen TV with DirectTV • High Speed Internet

**710 Silver Heights Blvd. • Silver City, NM**  
**575-538-5392 • coppermanor710@gmail.com**

# UCI PRO TEAMS



**APS Pro Cycling by Team Cadence Cyclery**



**Canel's | Java**



**Competitive Edge Racing**



**GWErco Sportfitness**



**Localiza Meoo/Swift Pro Cycling**



**Meridian Racing**



**Team Medellín**



**Modern Adventure Pro Cycling**



**Petrolike**



**Project Echelon Racing**



**Team Skyline**



# DOMESTIC ELITE TEAMS & CLUB TEAMS



**Team Colono Bikestation**



**Team Elevate**



**Kelly Benefits Cycling**



**Landis Cyclery / Trilogy Vet Med**



**Olinka Project**



**Primal - Audi Domestic Elite Squad**



**SoCalCycling.com**



**TaG Cycling**



# DOMESTIC ELITE TEAMS & CLUB TEAMS

# UCI PRO TEAM



**Aegis x Leaders of Enchantment**



**Analog Racing Team**



**Bravetta**



**Virginia's Blue Ridge  
Twenty28**



**Competitive Edge Racing**



**Equipe Dynamiks Feminine**



**Latin Allstars**



**Milton Women U23 Project**



**Patobike BMC**



**Project Chaos**



**Sonic Boom Elite and  
Black Dog Racing Mixed**



**Speedblock - Terun Elite**



**TaG Cycling**



**United Cycling Women**



WOMEN'S

# REGIONAL TRAVEL OPPORTUNITIES

## Southwestern New Mexico delivers on outdoor adventure, culture, and history

THOSE VISITORS WISHING to get a taste of the Land of Enchantment can find a lot of the most enchanting stuff in southwestern New Mexico. This region of the state — anchored by the gigantic landmass of the Gila Wilderness — represents high deserts and even higher mountains, hot springs and cold plunges, new vistas and ancient dwellings. While you're in the area enjoying the Tour of the Gila, here are some other regional things to see and do that will make your trip to New Mexico unforgettable.

Silver City is a gateway community to the Gila Wilderness and the Gila Cliff Dwellings National Monument, but it's also an art-filled historic city in its own right. Visitors to Silver City can delve into the mining heritage that defines the region, as well as take in a number of art galleries and local shops. Architecture downtown spans from Victorian to Pueblo-Deco, with a storied selection of coffee shops and restaurants to pop into for a bite to eat.

Silver City also opens the door to the massive Gila Wilderness, which is the first-ever designated wilderness area in the United States. Within the wilderness is the Gila Cliff Dwellings National Monument: a band of cliffs that shelter preserved structures that date back to the late 13<sup>th</sup> century. The caves provided protection, a stream maintained water access, and animal activity kept the inhabitants fed. Like the area of the Gila Cliff Dwellings, the surrounding Gila National Forest and the Gila Wilderness are decently profuse with running streams and river forks. Hiking, backpacking, and bikepacking remain popular options for the accessibility to the untouched wild lands.

An epic place to experience the power of water in the Gila is at a historic mill site turned recreation area called The Catwalk. Old mill water lines left a loose infrastructure upon which the Civilian Conservation Corps suspended walkways, amid the rocky cliffs near the small town of Glenwood. From these walkways almost a half-mile above, visitors can watch the river tumble across the canyon of the Mogollon Mountains.

But it's not only cold water that can be found in southwestern New Mexico — on the eastern side of Silver City sits Fay-



wood Springs. This naturally occurring hot spring is an oasis for those who want to soak their troubles away. Although there are many hot springs dotted across the New Mexican landscape (Hot Springs, NM famously renamed itself Truth or Consequences after a popular 1950s game show and still very much lives up to its original moniker), Faywood is the only one whose vistas overlook the legendary City of Rocks State Park — an otherworldly one-square-mile parcel where offshoots of an ancient volcano eruption stick out of the desert floor.

If solitude is what you seek, southwestern New Mexico also delivers on the ghost-town vibes. On the western edge of the Gila, the mostly abandoned town of Mogollon captures a 19<sup>th</sup>-century mining town frozen in its heyday. Mining tools and implements scatter around the single road, with a seasonally available museum and café available to the curious. Hundreds of miles to the east sits another ghost town from the mining rush. Chloride is a cowboy-era ghost town, complete with a “hanging tree” and a pioneer store, which is now a museum. It's the kind of place that's perfect for a pretend shoot-out on the dusty main road, just like in the old Westerns.

The biggest city in the southwest region of the state is Las Cruces — a bustling college town, a national monument gateway community, and the second-largest population base in the state. From anywhere in Las Cruces, you can



see the signature Organ Mountains-Desert Peaks National Monument, which is a craggy crest of mountain peaks that rise straight from the Chihuahuan Desert. Hiking and biking abound in this protected space, as well as the desert wildlife that makes its home here. After kicking around the monument, head to historic Mesilla, which is a classic plaza with shops and iconic New Mexican restaurants. And if you'd like to dig a little deeper into history, you can seek out the Prehistoric Trackways National Monument — a spot with footprints from an assortment of Early Permian animal life.

Southwestern New Mexico is essential viewing for the traveler who wants to get a quintessential experience of the Land of Enchantment, and the Tour of the Gila is a great reason to explore!

# STRONG SUPPORTERS

New and returning jersey sponsors provide services and funding essential to a stage race

TOUR OF THE GILA IS PROUD to be collaborating with JAKROO on the race jersey designs and production. Race director Jack Brennan works with JAKROO USA's Betty O'Neill. "Obviously JAKROO wants to be in front of people. Our growth has been so related to grassroots," she says. "We are fast, quality, high end. Tour of the Gila is a high-level stage race. JAKROO needs to be on those bodies and be seen."

Familiar with road cycling as a former bike racer herself, Betty also has a special connection to Tour of the Gila. Her husband Nathan won the opening time trial in 2007 and went on to win overall that year. "That's one of the reasons

why we want to stay connected to it."

Betty and Nathan ran their own stage race for 10 years. "We know what a horrendous challenge it is. It's hard as a racer to come back. It's way harder as a producer—and to gear yourself up to do it again and again after the hilarious abuse you get. I identify and just want to keep Tour of the Gila happening."

While she has never competed in Tour of the Gila ("because those hard climbs are so legitimate"), Betty adamantly supports the race in southwest New Mexico's mountains for that very reason: Stage races, especially ones as difficult as Tour of the Gila, are critical to American road cycling. "Against all odds, the pendulum is swinging back thanks to the people behind races like Tour of the Gila," she says. "This is what racing is about and what needs to happen for racing in the United States."

Brands need to support races that are hard, Betty says. "We don't want Tour of the Gila to leave. We need a stage race in Colorado; we need one in the Midwest; we need one on the East Coast. The missing stage races and the fact that Tour of the Gila still exists is a testament to Jack and the team he's built."

THE FOUR RACE JERSEYS FOR the 2026 Tour of the Gila presented by New Mexico True are sponsored by new and returning supporters of the world-class athletic event.

The red New Mexico True leader jersey is awarded to the individual in each category who is leading the overall time standings (general classification).

The green Gila Regional Cancer Center sprinter jersey goes to the cyclist leading the points classification determined by intermediate sprints and finishing place in certain stages. "We're incredibly proud to sponsor the Tour of the Gila, a race that showcases the strength and spirit of our community," says Robert Whitaker, CEO of Gila Regional Medical Center. "This event puts our region on the map and brings together athletes, volunteers, and families in a truly special way. Supporting events like this reflects our commitment to the people and places that make our community thrive."

The white Southwest Bone and Joint/Brian and Lynn Robinson Best Young Rider jersey signifies the leading rider under age 23 on the general classification.

The polka dotted Lyman Communications climber jersey is awarded to the racer winning the mountains points classification. Lyman Communications has supported Tour of the Gila for the past two years and returns in 2026 with connectivity solutions that contribute to athlete safety and aid media coverage of the race. "The challenges of providing mission-critical connectivity is epitomized by the grit and determination required to win the mountains points classification," says Lyman Communications CEO Aaron Rose.

Every left jersey sleeve bears the logo of the Leaders of Enchantment podcast. Every right sleeve is topped with the New Mexico True logo.

The designs, introduced in 2025, honor local history and cultures by displaying appreciation for the Mimbres Mogollon people, who thrived in the region between A.D. 1000 and 1130. The designs also compliment the race's tradition of awarding artisanal trophy bowls fashioned using similar processes to Mimbres black-on-white pottery.

In consultation with the Western New Mexico University Museum director, Tour of the Gila identified ollas and bowls representative of the prehistoric people who inhabited the landscapes that Tour of the Gila competitors interact with during the race.

**LEADERS' JERSEYS**

**RACE LEADER**  
New Mexico Tourism  
The race leader jersey is awarded at the end of each stage to the rider with the best general classification time (not necessarily the stage winner) and to distinguish the overall race leader in all the categories. Best overall time is the lowest cumulative time for all stages. This jersey will be awarded to the overall winner of the Tour of the Gila in each of the categories.

**CLIMBER JERSEY**  
Lyman Communications  
This is the King or Queen of the Mountain competition for the UCI Men and Women racers. Traditionally decorated with polka dots, this jersey is awarded each day to the best climber who accumulates the most points after crossing designated mountain climbs.

**SPRINTER JERSEY**  
Gila Regional Medical Center  
Sprint points are awarded at designated sprint lines on the courses. The rider with the most sprint points is awarded and wears the green jersey in the UCI Men and Women events.

**BEST YOUNG RIDER**  
Brian & Lynn Robinson / Southwest Bone & Joint Institute  
Recognizing the upcoming stars in cycling, the white jersey is awarded after each stage to the best of the young UCI Men and Women racers. This is based on the lowest cumulative time.

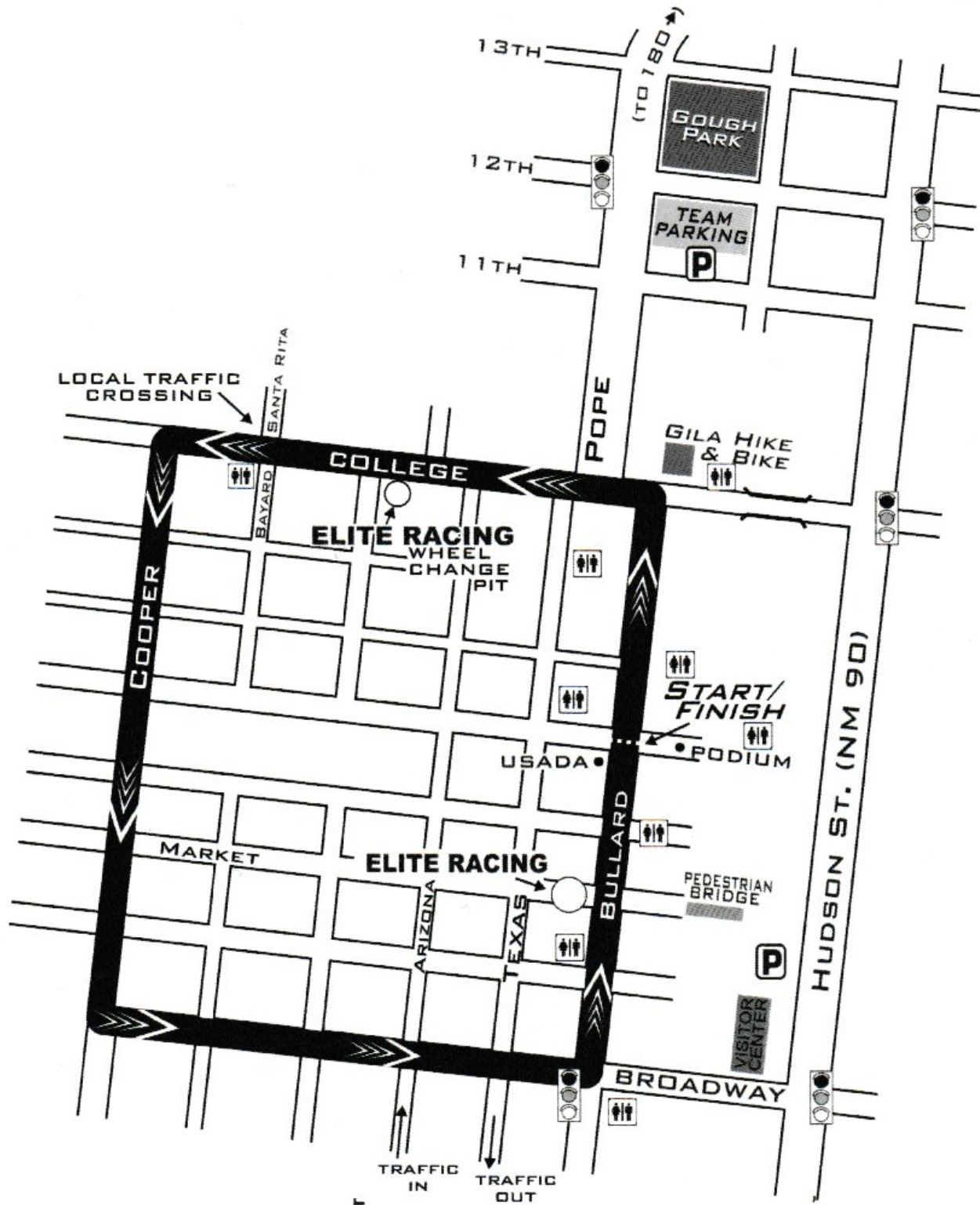
# DOWNTOWN CRITERIUM

p./b. Leaders of Enchantment

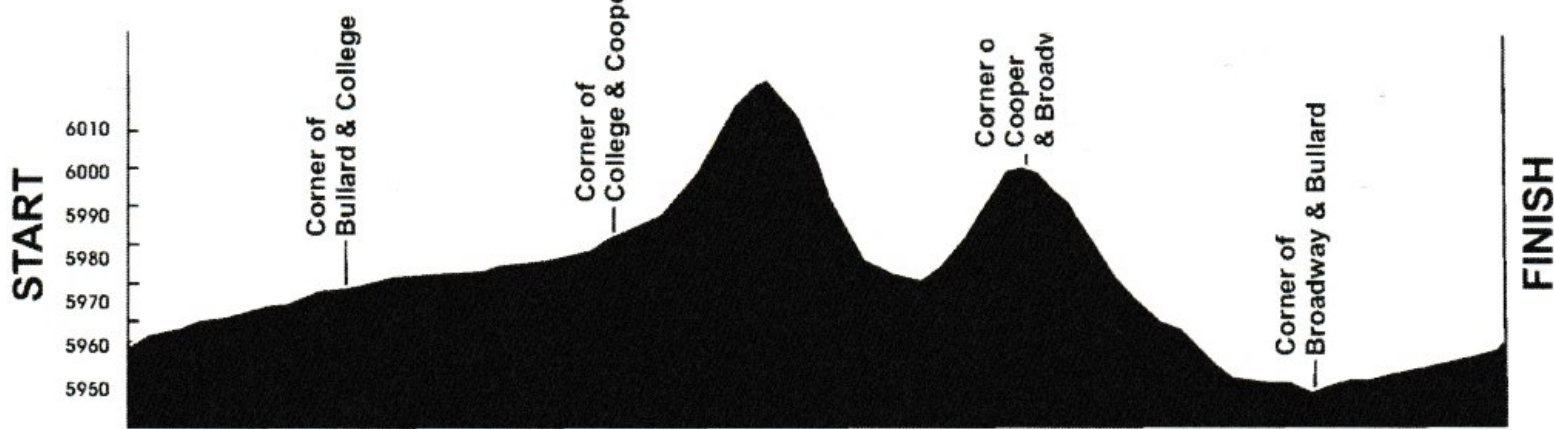
SAT., MAY 2

Course length: 1.08 mile (1.74km)

Category	Start
Men 4,5	8:00 a.m.
Master Men 1,2,3,4	8:45 a.m.
Women 1,2,3,4,5	9:35 a.m.
Men 3	10:25 a.m.
Men 1,2	11:25 a.m.
Citizen Races	12:30 p.m.
UCI Women	1:30 p.m.
UCI Men	3:10 p.m.



A SPECTATOR'S DELIGHT, the criterium brings a full day of racing to the Historic Downtown area of Silver City. Athletes make up to 40 laps around a closed course on Bullard, College, Cooper, and Broadway streets. At the corner of Broadway and Bullard streets, racers negotiate a 90-degree corner while reaching speeds in excess of 65 kmph. The start/finish line at Sixth and Bullard streets will have people lined up three-deep to watch exciting finish sprints. Don't forget the backstretches, including a steep descent on Cooper Street. Enjoy the vibrant galleries, merchants, and restaurants, and put your cowbells to work cheering on your favorite team.



# CITIZEN FUN RACES

p./b. First New Mexico Bank

SAT., MAY 2, AND SUN., MAY 3

Age	Course length
3 & 4	7th St. to Finish Line (400 ft.)
5 & 6	Up & Down Bullard St. (0.5 mi.)
7-9	Up & Down Bullard St. (0.5 mi.)
10-12	Up & Down Bullard St. (0.5 mi.)
13-16	1 lap (1.08 mi.)
17-34 Women	1 lap (1.08 mi.)
17-34 Men	1 lap (1.08 mi.)
35+ Women	1 lap (1.08 mi.)
35+ Men	1 lap (1.08 mi.)

## Watch and race

The Tour of the Gila brings world-class bicycle racing to New Mexico—but don't just sit on the sidelines.

### AT THE DOWNTOWN CRIT

ONE OF THE MOST TOUCHING events at the Tour of the Gila is the one where kids of all ages, 3 to 103, take to the streets of Historic Downtown during the Citizen Fun Races.

Registration is available online at [bikereg.com/tour-of-the-gila-citizen-fun-races](http://bikereg.com/tour-of-the-gila-citizen-fun-races) and at The Hub Plaza near the start/finish line. All kids 12 and under race free! The fee is just \$5 for 13-16 year olds and \$10 for people 17 years and older. Helmets must be worn, and parents or guardians must sign registration for children under the age of 18. Free T-shirts for participants while supplies last.

Saturday's Citizen Fun Races start at 12:30 with the youngest participants starting first.

### ON THE GILA MONSTER

ON SUNDAY, the 31-mile Citizen Road Race is open to riders age 13 and older. The course runs from Camp Thunderbird to Pinos Altos.

SINCE 1987, Tour of the Gila has invited visitors to southwest New Mexico annually to watch top bicycling talent compete on the roads in and around Silver City.

As both pro and amateur athletes pedal scenic racecourses over five days, fans can get a close-up view of the sport that is beloved worldwide. The most spectator-friendly stage is the Downtown Criterium on Saturday, May 2.

Young and old, recreational cyclists can pedal their own bikes during the Citizen Fun Races that day and also on Sunday, May 3. "My favorite part of the week is when the tiny little ones roll up on their bikes," race director Jack Brennan said. "It's fun that the whole state turns out to cheer them on."

One of the longest continually running bike races in the country, Tour of the Gila is again sanctioned by the Union Cycliste Internationale (UCI). Professional and elite cycling teams from across the globe received invitations to compete in Silver City for



points that count toward events like the 2028 Los Angeles Summer Olympics. Tour of the Gila is one of the only UCI stage races in North America.

Tour of the Gila also offers a range of USA Cycling-sanctioned races open to men and women of varying experience levels.

During Tour of the Gila, locals and visitors interact with the sport's top names, while the participants develop a deep connection to southwest New Mexico.

The race organization also provides unmatched opportunities to get involved through volunteering. Those with guest rooms can host racers. Others may serve as course marshals and mechanics, drive officials in the race caravan, provide emergency medical services, and manage radio communications.

No matter how familiar someone is with the sport of cycling, they can appreciate Tour of the Gila when they get involved.

# SWAG AND MORE

## Stop by sponsor booths at the race expo in The Hub Plaza

*Downtown is the center of the action on Saturday, May 2. During the criterium, there's lots to see during the races. And in between the competitions, which run from 8 a.m. to 5 p.m., there's lots to see at the local shops and also at the Tour of the Gila expo in The Hub Plaza.*

### **DO SUPPORT RACE SPONSORS.**

Title sponsor New Mexico True is on site on Saturday, May 2, specifically so spectators from all across the state and world can become more familiar with all the travel opportunities the Land of Enchantment presents.

Green sprinter jersey sponsor Gila Regional Cancer Center is encouraging participation in the hair donation event that kicks off on the start/finish line at noon. Drop by their booth to contribute to their efforts to send support in the way of donations and real human hair (!) to Locks of Love.

Official airline sponsor Advanced Air is offering travel info from their tent along the criterium course. They are also running a deal on flights into Silver City. Discount code 2026TOUROFTHEGILA15 is valid for SVC routes from ABQ & PHX when you book now through May 6th.

First New Mexico Bank of Silver City is sponsoring the Citizen Fun Races, and the smiling faces normally seen at the bank are helping with registration and giving out Tshirts to participants while supplies last. If anyone needs to borrow a helmet for the ride, ask Silver City Cycles for a loaner (575-388-1444, silvercitybikeworks@gmail.com).

### **DON'T PLAY WITH FIRE.**

The Gila National Forest is also distributing swag and fire prevention information at a booth near Adobe Springs Café during the Downtown Criterium. The Gila National Forest enacted Stage 1 Restrictions on March 23. The decision was made based on several factors including: long term severe drought in the Gila region, increased tree mortality across the forest due to drought and insects and forecasted weather patterns which indicate higher temperatures and drier conditions for March through June. Stage 1 Restrictions limit public campfires to designated campgrounds with adequate fire rings to limit potential for human caused wildfires. Several large fires in the Gila National Forest have been caused by humans including the Black Fire of 2022 which burned over 300,000 acres.

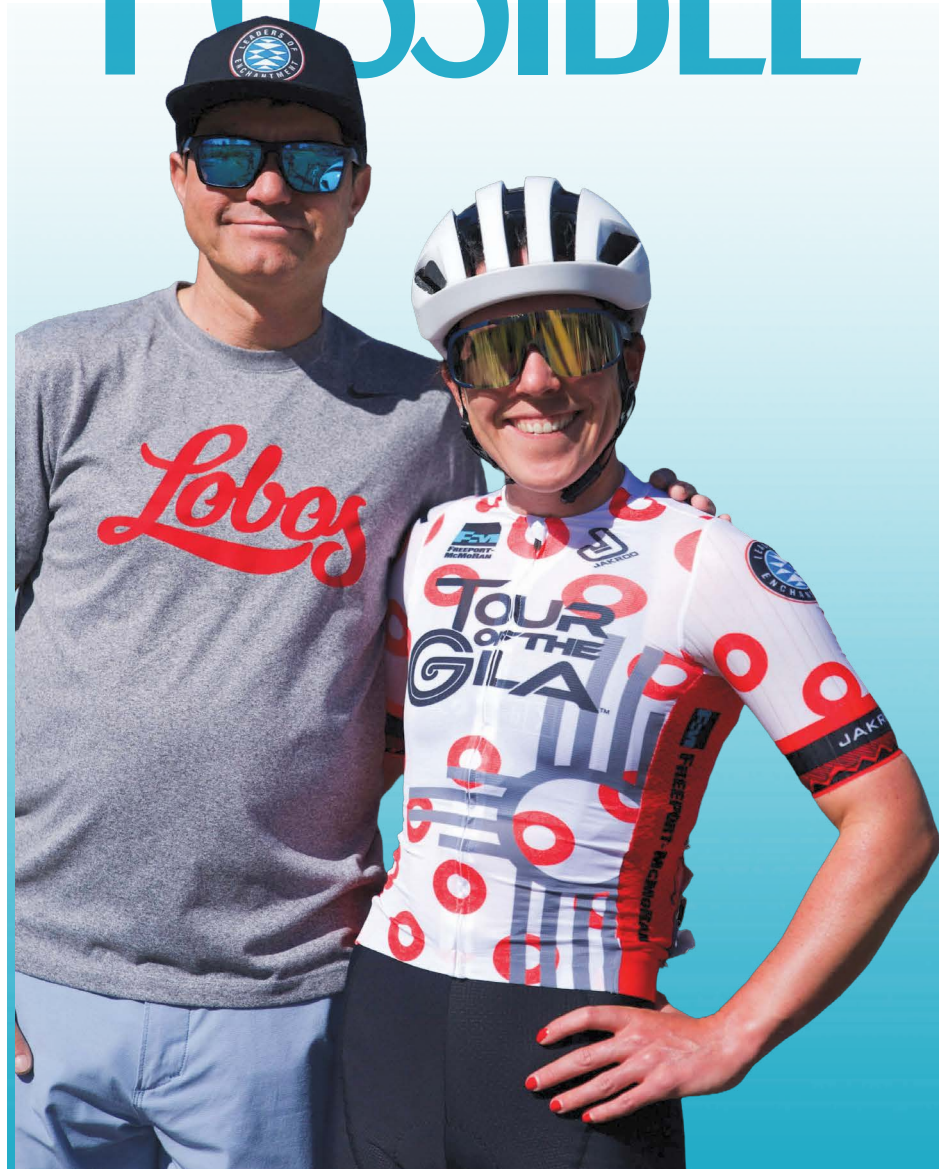
When watching the 2026 Tour of the Gila presented by New Mexico True from the roadside, please prevent wildfires by not parking your hot vehicle over tall grass or other vegetation.

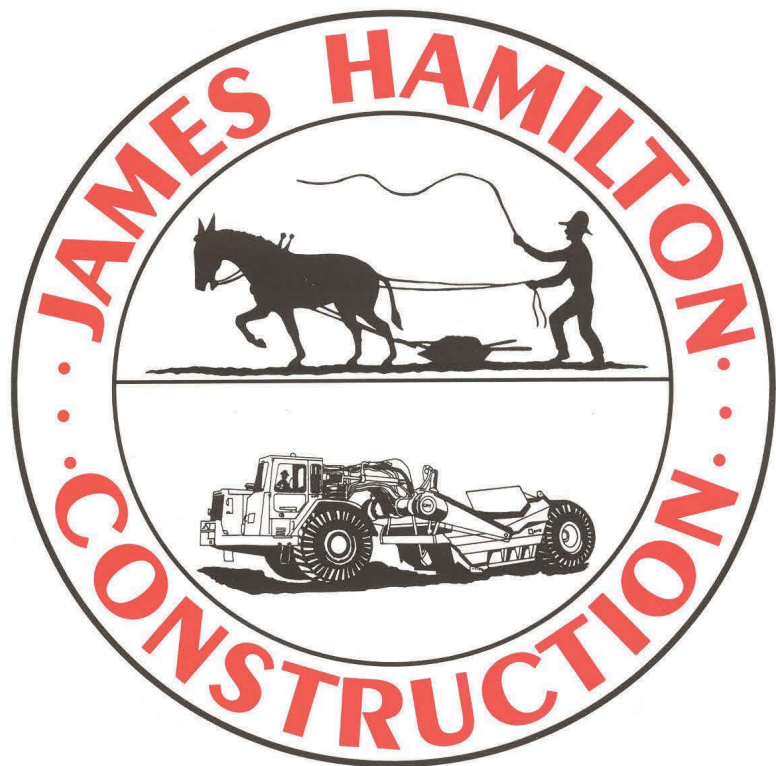


Podcast founder, multitime  
Tour of the Gila competitor  
Doug Campbell

media partner

# MAKING AMERICA'S MOST ICONIC STAGE RACE POSSIBLE





**CELEBRATING  
OUR 80TH  
YEAR**



**Proud supporter of Tour of the Gila**

## **READY SET, CHOP**

Gila Regional Cancer Center Invites Participation  
in Saturday's Hair  
Donation Event

TOUR OF THE GILA Presented by New Mexico True, along with 2026 sprinter jersey sponsor Gila Regional Cancer Center, are partnering to host a Locks of Love hair donation event during the Downtown Silver City Criterium on Saturday, May 2.



Starting with Gila Regional Cancer Center oncologist Dr. Michael Luca Durando, people who have grown out their hair will take the opportunity to chop their ponytails or braids to support Locks of Love in providing hairpieces to financially disadvantaged children suffering from long-term medical hair loss. The hair donation event kicks off on the start/finish line at noon, just ahead of the Citizen Fun Races. It will continue throughout the afternoon in The Hub Plaza at the hospital's booth.

"Chemotherapy causes hair loss in nearly two-thirds of cancer patients, adding an additional emotional burden to those already facing serious illness. I see this every day," Dr. Durando says. "Locks of Love provides real-hair wigs to those in need, helping restore confidence and a sense of normalcy."

The Gila Regional Cancer Center oncologist has grown his hair out over the past three years. Being 10 inches in length now, he has enough to make a meaningful contribution. "I am proud to support a cause that brings comfort to patients in need. I hope you will join us if you can," he says.

Donations of both hair and money support Locks of Love recipients.

Hair must be 10 inches or longer from tip to tip, clean and dry, bundled in a braid or ponytail, and free from bleach. Colored or permed hair is acceptable. Layered hair is acceptable if the longest layer is 10 inches. Curly hair may be pulled straight to measure the minimum 10 inches. Local barbers and hairdressers may get involved in the community-wide event and be on-hand to make the cuts. Contact Gila Regional Cancer Center marketing coordinator Jalen Duffy (jduffy@grmc.org) with interest.

Locks of Love pays for production of the hairpieces and so relies on donations to fund the program. All financial contributions are tax-deductible and may be made in person at the Gila Regional Cancer Center booth in The Hub Plaza on Saturday, May 2nd, or online at [locksoflove.org/financial-donation](http://locksoflove.org/financial-donation).

# FROM COMPETITOR TO SPONSOR AND BACK AGAIN

Attorney Gabriel S. Perez signs up as a supporter and an athlete

IN THE LATE 90s, Gabriel S. Perez first competed in his first stage race: Tour of the Gila. In 2025, he sponsored the road bicycling stage race for the first time. This year, the El Paso attorney returns as both a competitor and a sponsor.

He raced Tour of the Gila for four years in a row before law school when he could train 20 hours a week but had no money to buy a bike. "By the time you made it to Sunday, you felt you really accomplished something," Perez remembers. "It made a mark on me."

Perez now fits training in around his work schedule and purchases all his bikes through his local bike shop, Crazy Cat Cyclery. "I do a

long ride on the weekends and a couple group rides during the week. For me personally, I've done everything possible," he says. "I don't know if you can ever be truly ready for Tour of Gila."

He doesn't often tell people that he was badly hurt in a bike race 30 years ago. "It was a setback, but I survived."

With his practice, Perez specializes in injury-related claims in law. "I belong to a bike legal firm and handle cycling injury claims for Texas and New Mexico," he says. "When a cyclist gets hurt, they want somebody who can identify what it truly means to be an injured cyclist."



**YOUR DESIGN. OUR OBSESSION**

**JAKROO**

LEARN MORE

WWW.JAKROO.COM

ADVANCED AIR




**Fly Silver City to  
Albuquerque & Phoenix**

**As Low As \$91**

---

**ADVANCEDAIRLINES.COM**

## SHIFTING GEARS

Support drivers put pedal to the metal for the bike race

KELSEY BRENNAN PARTICIPATES IN Tour of the Gila every year. She's missed only a couple editions of the race since 2004. But she hasn't even owned a bicycle in a decade.

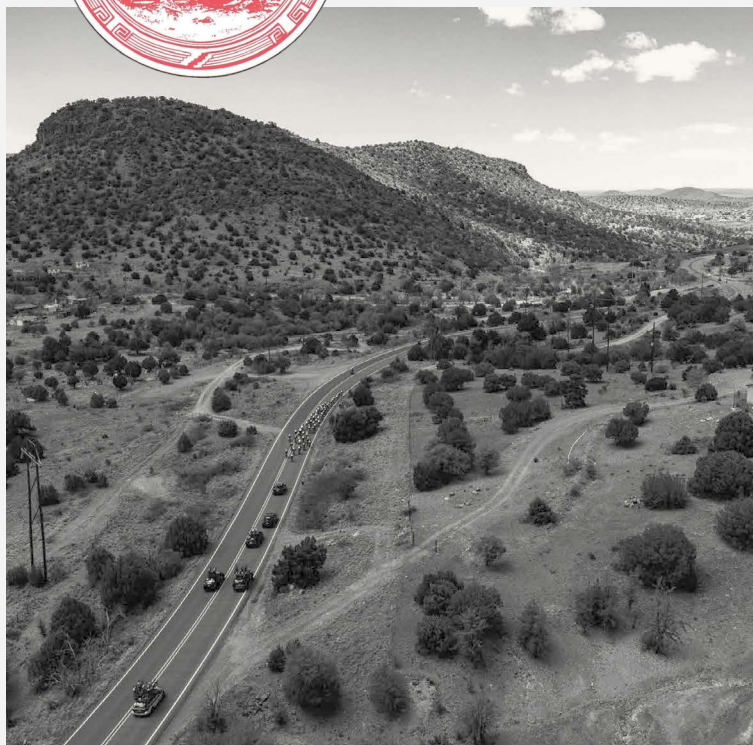
The daughter of Race Director Jack Brennan, Kelsey is going on 22 years of playing a critical role in the Tour of the Gila as a support driver. She's one of the dozens who volunteer their time and their cars to ensure the wheels keep turning on this world-class bike race.

In the car labeled "COMM 1," Kelsey's job involves carrying the head official (or commissaire) of the UCI men's race and following the main group of riders for the duration of each stage. "The official has the best picture of the race. We are managing the riders all around us and also communicating with the team cars behind us about the situation on the road," she says. "There's a lot of chaos there at our vehicle."

She was a senior in high school the first time she got behind the wheel to support the race. "Someone who was lined up to be the driver canceled. My dad just told me I was going to do it," remembers Kelsey, who had ridden in a support vehicle for one stage of the 2003 race. "I wasn't naïve to it. I grew up doing different things for Tour of the Gila. I'd known my passenger, Tom Simonson, forever. He was good at giving direction and didn't put much pressure on me."



The City of Bayard welcomes cyclists from near and far year-round.



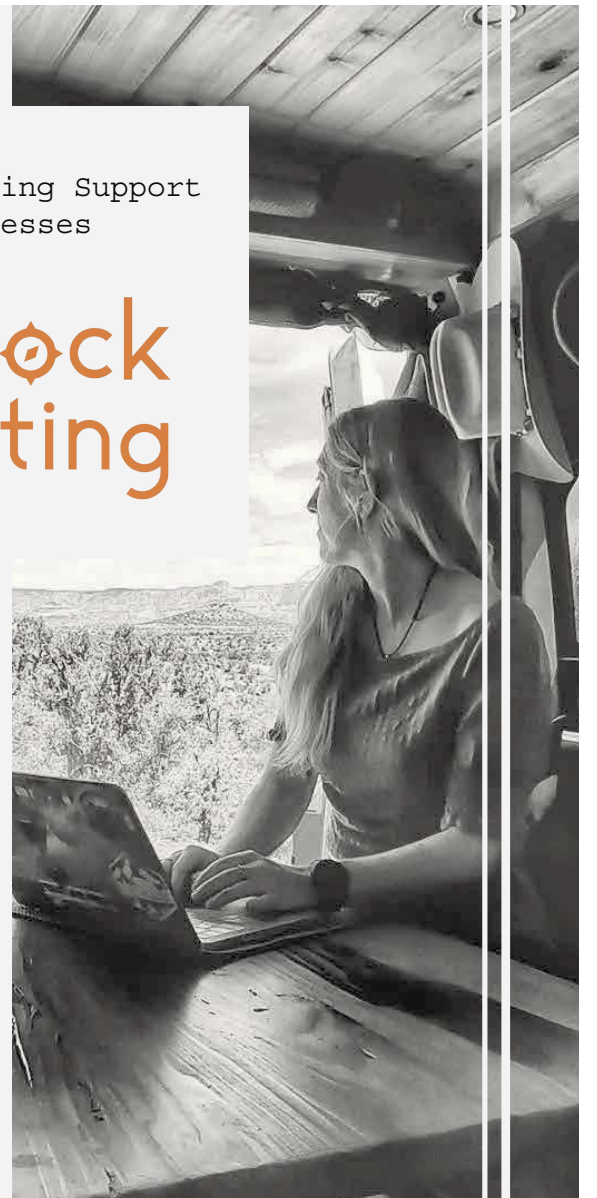
**BAYARD, NM**

WORTH A REPEAT VISIT

Flexible Marketing Support for Small Businesses

## Boondock Consulting

Navigating marketing can feel like you're wandering lost in the boondocks. Boondock Consulting provides practical, affordable marketing support, including search engine optimization, paid ads support, email marketing, website design and hosting, and more. The goal is to help your business reach more people without wasting time or money. Boondock Consulting is built for small businesses that want to grow at their own pace with a clear, realistic plan.



Kelsey appreciates her dad's passion for Tour of the Gila. "It's something he's very committed to, so being just a little part of the race is nice as his daughter. And I just love Silver City. The race is good for Silver City, so being helpful is a good contribution to the place that raised me."

She learned to drive on the streets that make up Tour of the Gila racecourses. So, while she can't rattle off cycling stats or even tell you the exact mileage of each stage, Kelsey knows every curve of the road. Her favorite stage is the Inner Loop Road Race which crests into Pinos Altos before heading into the Gila National Forest. "That descent by Bear Creek Cabins is really fast and rolling. It shows off my skills. Passengers who've never been with me are pretty impressed at that point," she says. "I'm amendable for anybody's style. We've had tons of different officials from all over the world. I mold to what they're wanting and what I feel they'll be comfortable with."

A Tucson resident since graduating high school, Kelsey works in property management but takes time away from her job to participate in the event that's so important to her family. "A lot of people in my world don't understand what the sport is. They don't understand what it means to me and our community."

**MURRAY HOTEL**  
Silver City, New Mexico  
A STEP BACK IN TIME...

Step into a piece of history at the Murray Hotel, a cherished landmark built in 1938 in Silver City, NM, offering a perfect fusion of vintage allure and modern hospitality. Book your next stay, group event or corporate meeting today.

Scan Me For More Info!

(575) 956-9400  
murray-hotel.com  
200 W. Broadway St.  
Silver City, NM 88061

**THE LAW OFFICE OF GABRIEL S. PEREZ**

EXPERIENCED. DEDICATED. READY TO FIGHT FOR YOU.



**OUR SERVICES:**  
PERSONAL INJURY  
CIVIL LITIGATION  
CRIMINAL DEFENSE  
CRIMINAL LAW

SERVING EL PASO AND ALBUQUERQUE.  
CALL TODAY FOR YOUR FREE CONSULTATION.

915.444.5351

WWW.GABRIELSPERZLAW.COM

@GSPALAWFIRM

**THE Seedboat COLLECTIVE**  
work | connect | discover

**OFFICIAL RACE MEDIA CENTER** 2026

\* Stop by the Downtown Criterium After Party  
Sat. May 2 | 4 – 9 PM  
Open Space Brewing  
Fire & Ice Pizza

Scan for info about coworking plans, meeting space reservations, and event bookings.

214 W. Yankie St., Silver City, NM  
theseedboat.com

# GILA MONSTER ROAD RACE

p./b. New Mexico True

**SUN., MAY 3**

**Length**

11-165.8 km. (69-103 mi.)

THE QUEEN STAGE is renowned as one of the toughest days of racing in North America. This iconic course takes the racers in a counterclockwise direction around the loop they rode on Friday. After a descent down Hwy 152, the course travels 30 miles through the Mimbres River Valley and around Lake Roberts. Racers face the grueling ascent from Sapillo Crossing to Wild Horse Mesa and complete the climb to the Pinos Altos finish. The UCI Men's race turns right at the intersection with Hwy 35 and follows Hwy 15 for seven steep miles to Copperas/Anderson Vista, where the road tips down toward the turnaround at the Gila Cliff Dwellings National Monument Visitor Center. The Category 1 climb from the Gila River leads to another speedy descent and the arduous Sapillo climb. Then, the road winds through the Gila National For-

est where charred trees stand as evidence of the 2025 Trout Fire. UCI Men complete 2,853 m. (9,360 ft.) of climbing over 166 km. (103 mi.) before reaching the village of Pinos Altos.

**Category**

- Men 1,2
- Women 1,2,3,4,5
- Men 3
- Master Men 1,2,3,4
- Men 4,5
- UCI Men
- UCI Women

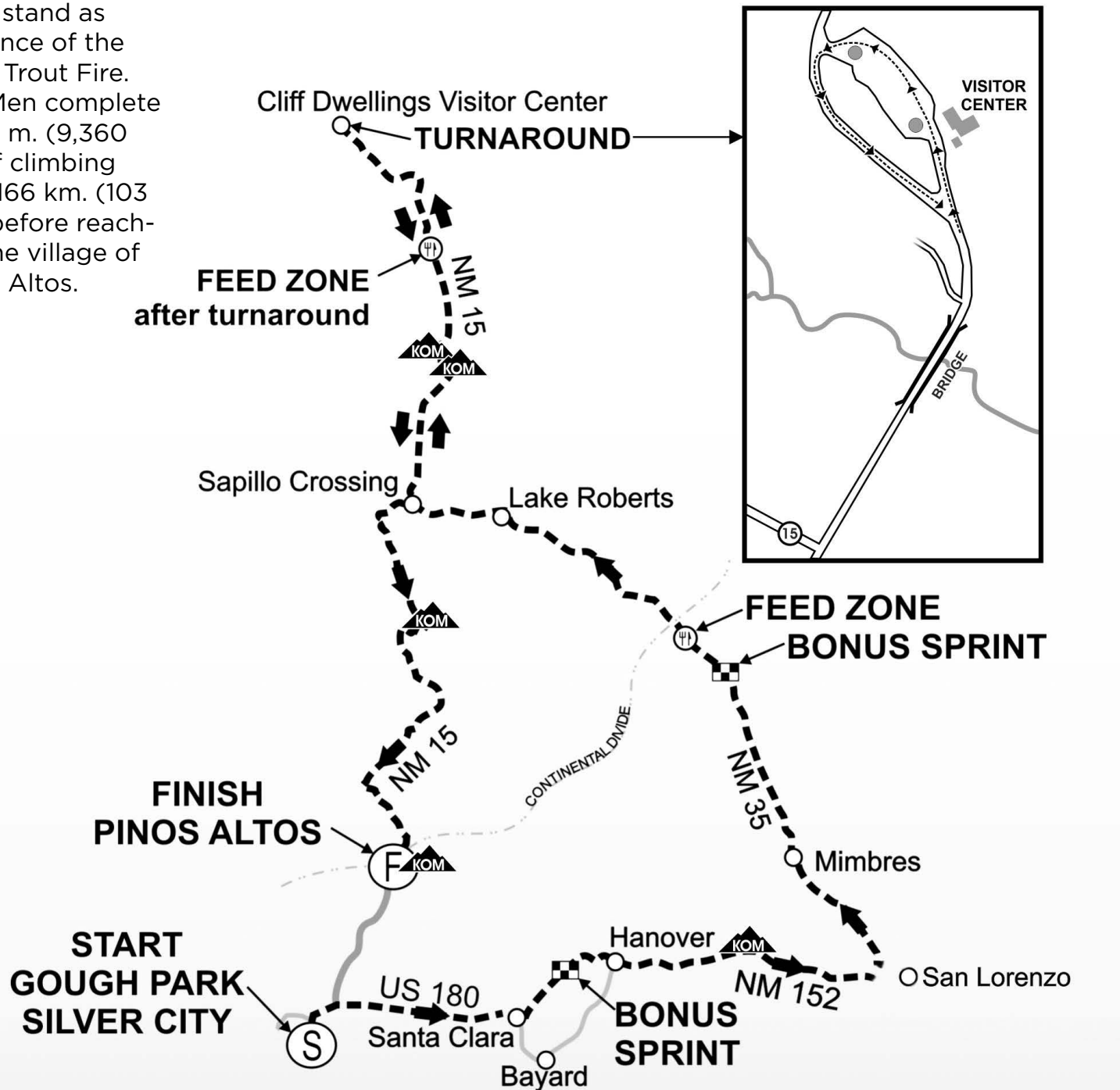
**Start**

- 7:30 a.m.
- 7:40 a.m.
- 8:00 a.m.
- 8:20 a.m.
- 8:50 a.m.
- 9:45 a.m.
- 10:05 a.m.

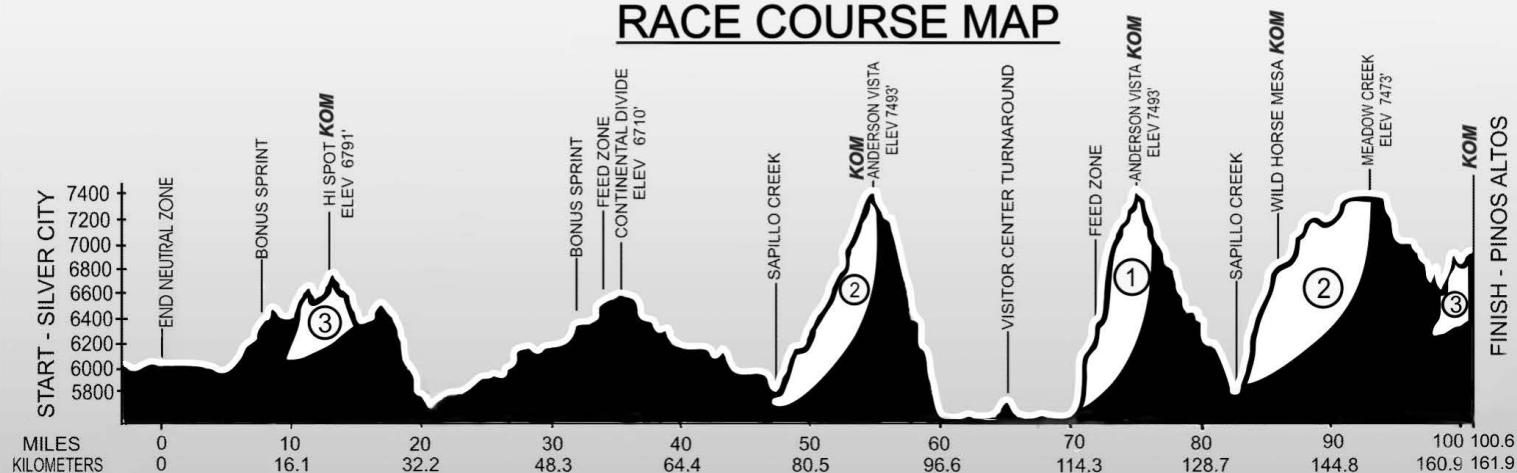
**Camp Thunderbird Start**

Citizen Road Race

8:30 a.m.



**RACE COURSE MAP**





**GET RESULTS & UPDATES  
FROM START TO FINISH AT  
TOUROFTHEGILA.COM.**



**FOXWORTH  
GALBRAITH  
LUMBER COMPANY**

A Division of 



*Relax and Renew*

Family vacations in a beautiful setting

[www.agaveridgeretreat.com](http://www.agaveridgeretreat.com)

Freeport-McMoRan and our employees are pleased to once again support the Tour of the Gila.

For more than 100 years, the company's New Mexico operations have been a proud member of the community while safely and responsibly supplying the world with essential metals.

Learn more about our commitment to New Mexico at [FreeportInMyCommunity.com](http://FreeportInMyCommunity.com).



**GOOD LUCK,  
RACE SAFE!**



**Better Homes and Gardens** REAL ESTATE | SILVER CITY

120 E. 11<sup>TH</sup> STREET (575) 538-0404 www.BetterSilverCity.com

# Powering New Mexico, Together

**Powering homes and businesses with 99.9% reliability** by building a more resilient grid

**Delivering annual customer savings of \$117 million** by investing in transmission to connect to regional markets

**Meeting New Mexico's energy needs with 80% carbon-free energy**

**PNM**  
Powering New Mexico, Together

**Official retailer of Tour of the Gila merchandise**

Gila HIKE & BIKE

**GILA HIKE & BIKE**  
MORE THAN A BIKE SHOP  
103 E. College Ave, Silver City, NM 88061

**Health, Community, Family, Environment**

# This is why we Co-Op!

**SILVER CITY FOOD CO OP**

www.silvercityfoodcoop.coop      907 N. Pope Street, Silver City NM 575-388-2343      Open Monday thru Saturday 8a.m.-8p.m. Sunday 9a.m.-6p.m.

# HUMPHREY'S

**SINCE 1972**

IN GOD WE TRUST  
575-538-2152  
hei-humphreys.com

**Septic Service | Installations | Drain Cleaning  
Portable Toilets | Roll Off Dumpsters**

**MORNING STAR**  
QUALITY PRODUCTS FOR QUALITY PEOPLE  
EST. 1992

KUHL, OSPREY, NERF, KEEN, prAna, ALTRA, patagonia, OR OUTDOOR RESEARCH, CAMELBAK, HEY DUDE, smartwool

**SCREEN PRINTING  
EMBROIDERY  
OUTDOOR APPAREL  
SPORTING GOODS**

809 N. Bullard, Silver City, NM morningstarsports.com

# SILVER CITY RADIO

- Market your business or event with SkyWest Media - Silver City Radio
- Your Connection to Southwest New Mexico Residents
- Four stations serving Grant, Luna, Hidalgo, and part of Catron County
- Local news, local happenings, great music!
- Reach 80% of the residents
- Cost Effective - Reach thousands!

**Q92.9**, **KNFT** Today's Country, **95.0 AM** Oldies 950 - 1965 FM THE DANA SHOW, **THE Planet 97.7**, **KZXQ FM**

575.342.1000      silvercityradio.com      1560 N. Corbin St. Silver City, NM

# 2025 WINNERS



**General Classification:**

1. Kieran Haug, Project Echelon Racing (New Mexico True leaders jersey winner)
2. Eric Brunner, Competitive Edge Racing
3. José Muñiz Vazquez, Olinka - Specialized

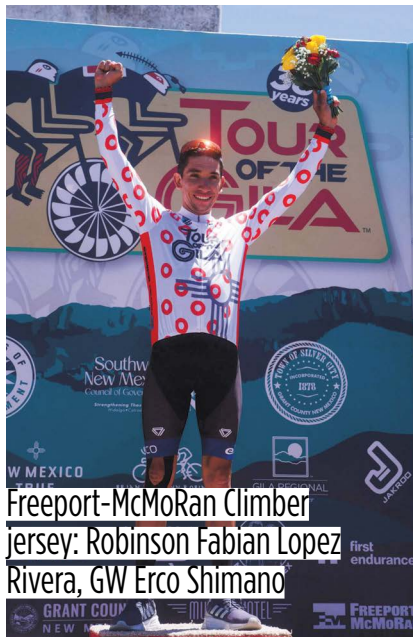


**General Classification:**

1. Lauren Stephens, Aegis Cycling Mixed Team
2. Sidney Swierenga, Tag Cycling Race Team
3. Emma Langley, Aegis Cycling Mixed Team



Gila Regional Medical Center sprinter jersey: Fausto Esparza Martinez, Olinka-Specialized



Freeport-McMoRan Climber jersey: Robinson Fabian Lopez Rivera, GW Erco Shimano



Southwest Bone & Joint Institute/Brian & Lynn Robinson Best Young Rider jersey: Jonas Walton, Project Echelon Racing



Southwest Bone & Joint Institute/Brian & Lynn Robinson Best Young Rider jersey: Sidney Swierenga, Tag Cycling Race Team  
New Mexico True leaders jersey, Freeport-McMoRan Climber jersey, Gila Regional Medical Center sprinter jersey: Lauren Stephens, Aegis Cycling Mixed



**Team Classification: Project Echelon Racing**



**Team Classification: Aegis Cycling Mixed Team**

LAND OF ENCHANTMENT

NEW MEXICO  TRUE